



Te Ope Whakaora

# Newsletter

FEBRUARY 2025

**KIA ORA**

*Welcome to Hutt City Salvation Army*

## PASTORAL CARE



To enable us to carry out an effective pastoral care among our people, it would be great if you know of any people who would like a visit or phone call to contact

Cameron, Jeannine  
or Mike 04 5700 273

## CHINESE FELLOWSHIP

圣经学习;圣经讨论

Tuesday Bible Study  
10-11.30am  
&  
Thursday 10-11.30am

During School Terms  
Contact Zoe or Hannah  
04 5700 273

# Fellowship

## OVERCOMERS SENIORS



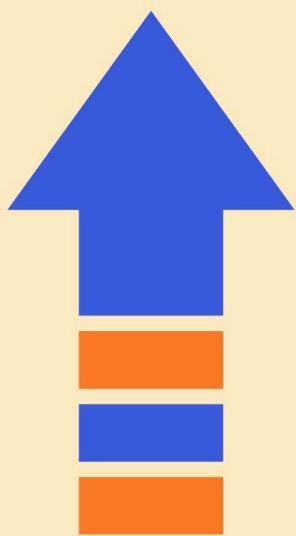
Starting 12th Feb

Fortnightly  
Wednesday's  
10am - 11.30am  
04 5700 273

## DISIPLESHIP MEN'S & WOMEN'S LIFE GROUPS

Mike Carrington works closely with our Pastors in establishing a discipleship culture. We would love everyone to be engaged in personal discipleship development and involved in life transformation  
Contact Mike 04 5700 273

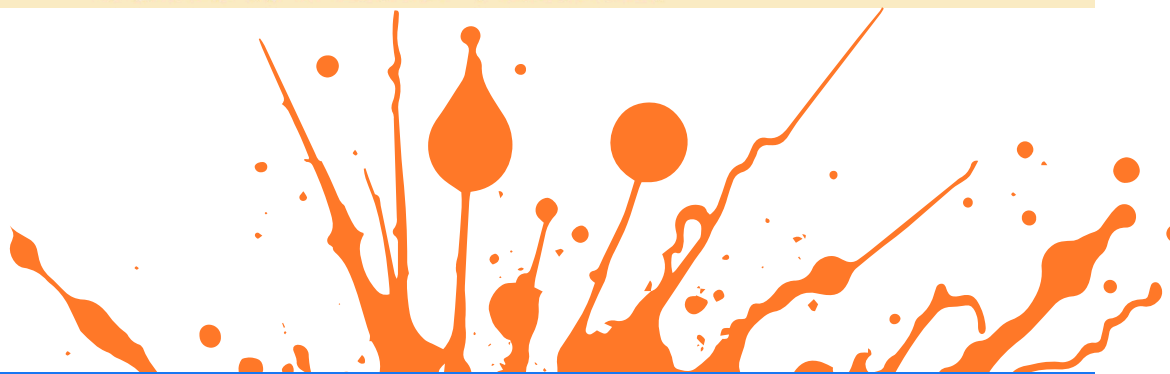




# LOOK UP



A CELEBRATION OF OUR TAMARIKI  
SUNDAY 2ND MARCH



**WYTT CITY SALVATION ARMY**  
**Regenerate Youth**  
EST. 2022

**Contact Rosey**  
**04 5700273**  
**for more info**

**EVERY FRIDAY! 6.30PM-9.00PM SCHOOL TERM YOUTH LOUNGE.**





YOU'RE INVITED TO

*Wednesday  
Lunchtime  
Lifegroup*

1PM - 2PM

5 Weeks in the Green Room

**DURING SCHOOL TERMS**

**JOURNEYS**

**WARRIOR WOMEN - DEBORAH**

Starts 12th Feb - Wednesday's 1pm

SEE JEANNINE OR LIZ FOR MORE INFORMATION



# ALL IN THIS TOGETHER



ANY KIND DONATIONS OF NOODLES OR TEAR TOP CANNED FOOD  
MUCH APPRECIATED

(Please no expired food)

A food basket will be available at the front of the auditorium on Sunday's  
or please bring in during the week.

**Do you know about the Foodbank Project?**

**" The foodbank project is the first online donation platform in New Zealand  
where people can buy food items that are donated to  
Salvation Army Foodbanks  
to be given to kiwis in need"**

## Tithes & Offerings

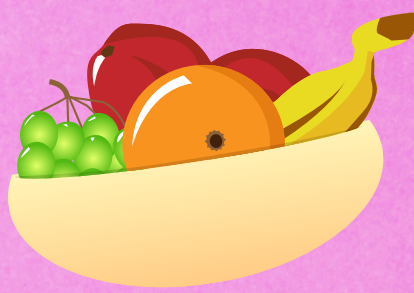
There will be a time  
during the service for giving  
No obligation for visitors

Contact Zoe or Wai Phang for  
banking details

04 5700273 or email

[huttcity.corps@salvationarmy.org.nz](mailto:huttcity.corps@salvationarmy.org.nz)





# Sunday Morning Tea



2/2  
Jenny &  
Heather

9/2  
Barry &  
Joy

16/2  
Jeannine &  
Youth

23/2  
Faye &  
Janice

## "Opportunities to serve"

We are looking for people who would be keen to serve in the kitchen and take a turn on morning tea roster.

What is required is provision of morning tea, set up of morning tea, serving of drinks, and clean up.

You can be as creative as you like – you can bake or buy biscuits from the supermarket. You could shake things up and serve fruit and vege sticks 😊

If you're keen to be involved please either talk to Jeannine, text her on 021517195

or email on [Jeannine.serevi@salvationarmy.org.nz](mailto:Jeannine.serevi@salvationarmy.org.nz)

Thanks Whanau



**CALENDARS AVAILABLE AT RECEPTION**

Or see Wai Phang or Zoe

**\$5**

TAKE GOD'S WORD  
WITH YOU WHEREVER YOU GO



To download the Bible App from YouVersion scan this QR code or search 'YouVersionBible' in the application store on your device. Alternatively, visit [bible.com](http://bible.com)

FIND BIBLE PLANS FROM **THE SALVATION ARMY INTERNATIONAL** ON THE BIBLE APP



**7th day of every month**

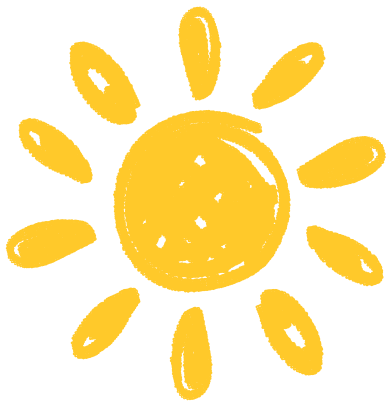
Please join us online for a 45 minute prayer meeting, starting at 7pm NZ time

Between April & September there will be a second prayer meeting starting at 6pm (NZ time) to allow for Samoa & Tonga to participate

This will include a short welcome, scripture, prayer topics and time for people to pray (open-mic style)

To participate in the prayer meetings, visit [salvationarmy.org.nz/praying-together](http://salvationarmy.org.nz/praying-together)





## **Christian Fellowship For Disabled Wellington Branch**

**Are holding their Annual Regional Camp at El Rancho, Waikanae over the weekend of 28th February-2nd March 2025.**

**This is a predominantly adult camp, but families are welcome. Our speaker is Louise Rostron from Wanganui and our theme is “Faith, Hope & Love”.**

### **HOW YOU CAN HELP:**

**Firstly by praying that we recruit enough helpers and support people for our disabled campers; for the weather so all planned activities can go ahead; for an incident-free camp.**

**By sponsoring a disabled person to attend (\$150 + \$40 transport if required).**

**Account details are - CFFD Wellington, Account 01-0142-0029685-12**

**By sponsoring a helper or support person to attend (from \$40 to \$150).**

**By attending yourself as a helper or support person.**

**By bringing a disabled person along who you can support.**

**For further info please phone John/Lyn on (04) 569-9096 or 0274343643 or email [cffd-wgtn@actrix.co.nz](mailto:cffd-wgtn@actrix.co.nz)**



# WHAT'S ON AT HUTT CITY

## Sunday Prayer 9.30am (Prayer Room)

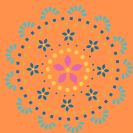
**Sunday Service 10.30am**

**CHILDREN'S MINISTRIES - Sunday Mornings**

**OVERCOMERS (Senior's Ministry)**  
Fortnightly on Wednesday's 10- 11.15am

**CHINESE FELLOWSHIP**  
Tuesday 10-11.30am BIBLE STUDY/ SOCIAL ACITIVITY  
Thursday 10-11.30am ENGLISH LEARNING

**REGENERATE YOUTH**  
Friday 6.30pm (Yr 9+) \$2



**UFO (Crafts)**  
First Saturday of the month



DURING SCHOOL TERMS

## FOR MORE INFO

**Corps Officer/ Pastor - Major Jeannine Serevi**  
**Corps Officer /Community Ministries Director - Captain Cameron Millar**

**Reception 04 5700 273**  
**Email - [huttcity.corps@salvationarmy.org.nz](mailto:huttcity.corps@salvationarmy.org.nz)**  
**Website - [salvationarmyhuttcity.org.nz](http://salvationarmyhuttcity.org.nz)**  
**Cnr Kings Cres & Cornwall St, Lower Hutt**



@huttcitysalvationarmy